



Mahatma Education Society's

DTE Code : MB 3160

PILLAI HOC INSTITUTE OF MANAGEMENT STUDIES & RESEARCH

Pillai HOCL Educational Campus, HOC Colony, Rasayani, Via. Panvel, Dist. Raigad. Pin 410207

Tel: 02192 - 669000 / 01 / 02 / 03 / 04 / 05 / 06 / 07 / 08 / 09

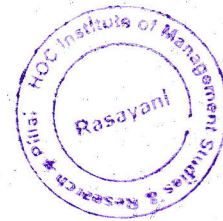
Website : www.phimsr.ac.in Email : phimsr@mes.ac.in

Approved by AICTE, DTE, Government of Maharashtra and Affiliated to the University of Mumbai

7.3.1QIM

Institutional Distinctiveness

(From AY 2019-20 To 2023-24)



7.3.1 Institutional Distinctiveness: Synergizing Academic Environment at PHIMSR

The distinctiveness of an educational institution is often reflected in the competencies and qualities its students demonstrate when they encounter real-world challenges in corporate and business settings. At Pillai HOC Educational Campus (PHIMSR), this distinctiveness is cultivated through a comprehensive approach to student development aligned with the New Education Policy 2020. This report delves into PHIMSR's integrated educational model, which creates a dynamic and supportive environment conducive to holistic student growth.

Holistic Development Framework

PHIMSR is committed to the holistic development of its students. The institution's integrated campus environment seamlessly blends academics, extracurricular activities, technological advancements, and community engagement. This holistic approach ensures that every aspect of campus life contributes to the students' overall learning experience. The cohesive nature of the campus fosters resource sharing, thereby creating a supportive and dynamic educational ecosystem.

Career Progression and Resource Sharing

A key focus at PHIMSR is the career progression of its students. The institution serves postgraduate students from various disciplines, including arts, science, commerce, and engineering. The integrated campus model facilitates comprehensive career planning and progression by leveraging shared human and physical resources across sister institutions. This mutual sharing environment supports not only academic growth but also personal and professional development, benefiting all participants.

Collaborative Learning and Events

In alignment with the vision of PHIMSR's founder, who emphasized holistic development, the campus promotes collaborative learning through various events. Activities such as Euphoria, Shivjayanti, and the annual sports meet provide platforms for students to engage in collaborative problem-solving and critical thinking. These events encourage a positive



approach to challenges and stimulate the necessary thought processes for innovative solutions. Sharing human capital across institutions provides students with diverse perspectives, enriching their cognitive and analytical abilities.

Geographic and Demographic Outreach

PHIMSR caters to the educational needs of students from a broad geographic area, including Khopoli, Alibaug, Uran, Karjat, Pen, and Panvel, covering a periphery of nearly 100 kilometers. The student body mainly consists of individuals from middle-class families and urban and semi-urban backgrounds. The integrated campus model is particularly beneficial for these students, offering them easy access to a wide range of resources in one location. This accessibility is crucial for their educational advancement and personal development.

Diverse Student Body and Integration

The diverse backgrounds of PHIMSR's students contribute to a rich and vibrant campus culture. The integrated campus environment facilitates the blending of these diverse backgrounds, promoting holistic development through shared experiences and mutual learning. This integration is essential for fostering a sense of community and belonging among students, which enhances their overall educational experience.

Active Participation and Experiential Learning

Active student participation in college festivals such as Euphoria is a significant aspect of PHIMSR's educational approach. These festivals encompass a wide range of activities, including creativity, finance, hospitality, and other essential aspects of event management. Participating in these events allows students to apply management theories in practice, enhancing their practical skills. Additionally, these activities help students develop networking and soft skills such as effective communication, multitasking, and a self-starter attitude. Engaging in volunteering and organizing events also fosters critical thinking and problem-solving abilities.



Technological Integration

PHIMSR places a significant emphasis on the integration of technology in its educational model. The institution has equipped its classrooms with the latest technological advancements to enhance the learning experience. This includes the use of smart boards, digital libraries, and online learning platforms, which facilitate a modern and interactive approach to education. By staying abreast of technological trends, PHIMSR ensures that its students are well-prepared for the digital age.

Community Engagement and Social Responsibility

PHIMSR encourages its students to actively participate in community service and social responsibility initiatives. These activities are designed to instill a sense of empathy and civic duty among students. By engaging in community service, students learn the importance of giving back to society and develop a sense of responsibility towards the community. This aspect of education at PHIMSR helps in shaping well-rounded individuals who are not only academically proficient but also socially responsible.

Research and Innovation

Research and innovation form a core component of the educational framework at PHIMSR. The institution encourages students and faculty to engage in research activities and contribute to the body of knowledge in their respective fields. PHIMSR provides the necessary resources and support for research initiatives, including access to research journals, laboratories, and funding opportunities. This focus on research fosters a culture of inquiry and intellectual curiosity, preparing students to contribute to advancements in their fields.

Student Support Services

PHIMSR provides a range of support services to assist students in their academic and personal development. These services include academic counseling, mental health support, career guidance, and financial aid. By offering these services, PHIMSR ensures that students have access to the necessary resources to overcome challenges and succeed in their academic pursuits.



PHIMSR's commitment to synergizing its academic environment through holistic development, resource sharing, collaborative learning, and diverse student integration distinguishes it as a unique educational institution. The comprehensive approach adopted by PHIMSR not only prepares students to face real-world challenges with confidence and competence but also nurtures their personal growth and development. As ambassadors of the institution, PHIMSR students embody the values and skills imparted through this integrated and holistic educational model.

In conclusion, PHIMSR's distinctive approach to education, characterized by its emphasis on holistic development, technological integration, community engagement, research and innovation, and international collaborations, positions it as a leader in the field of higher education. This integrated model ensures that students are well-equipped to meet the demands of the modern world and contribute positively to society.



Director
Pillai HOC Institute of
Management Studies & Research
Rasayani, Tal. Khalepur,
Dist. Raigarh - 410 207



7.3.1 Institutional Distictiveness – Integrated Campus

Integrated Campus





Studio Room



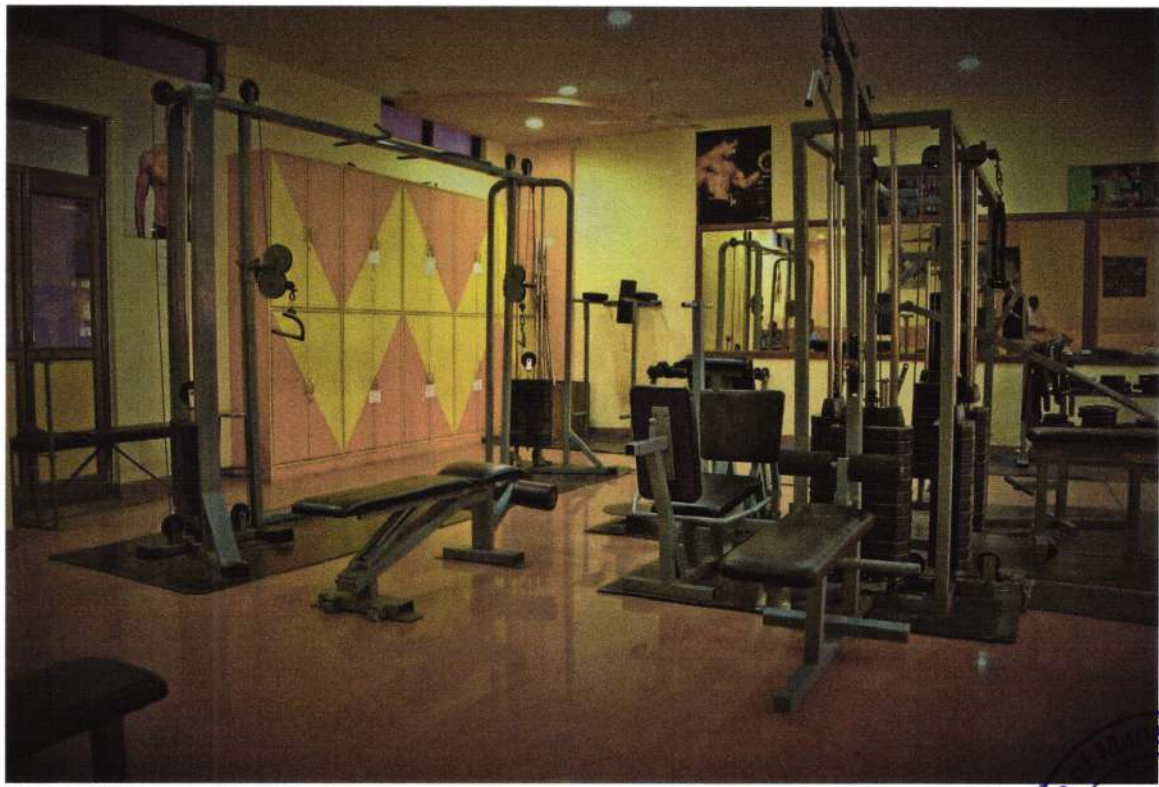
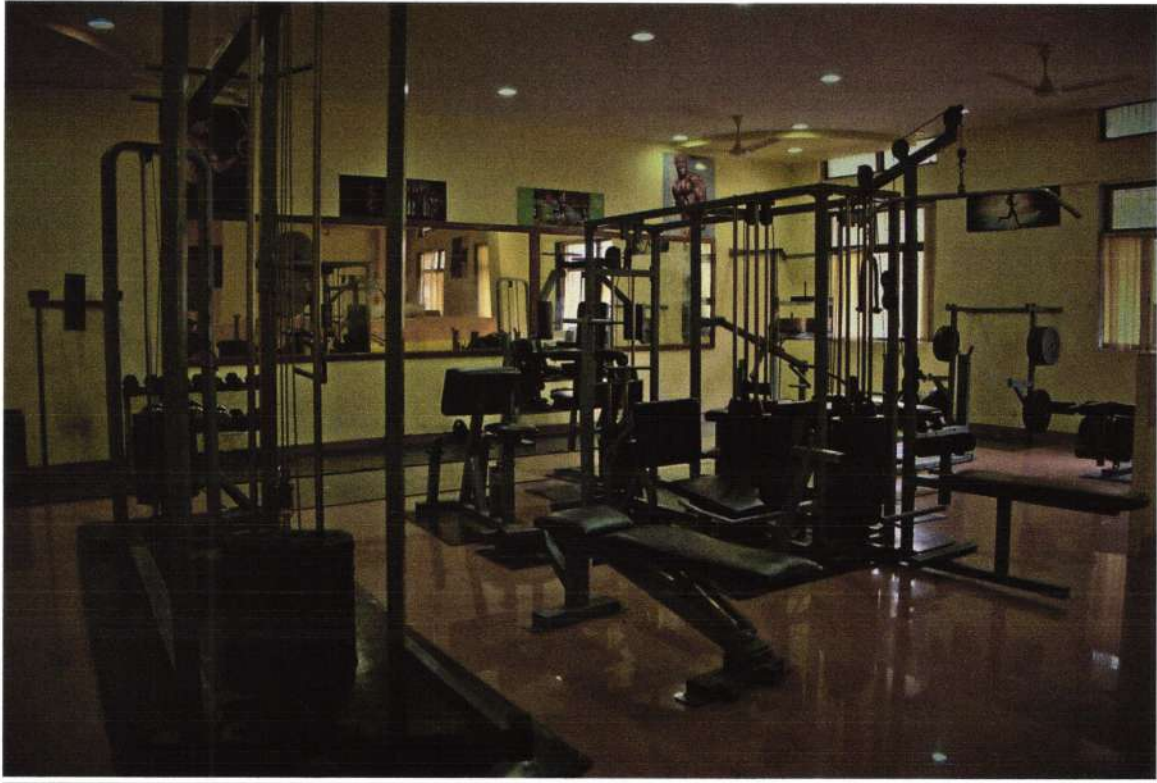
Shooting Range



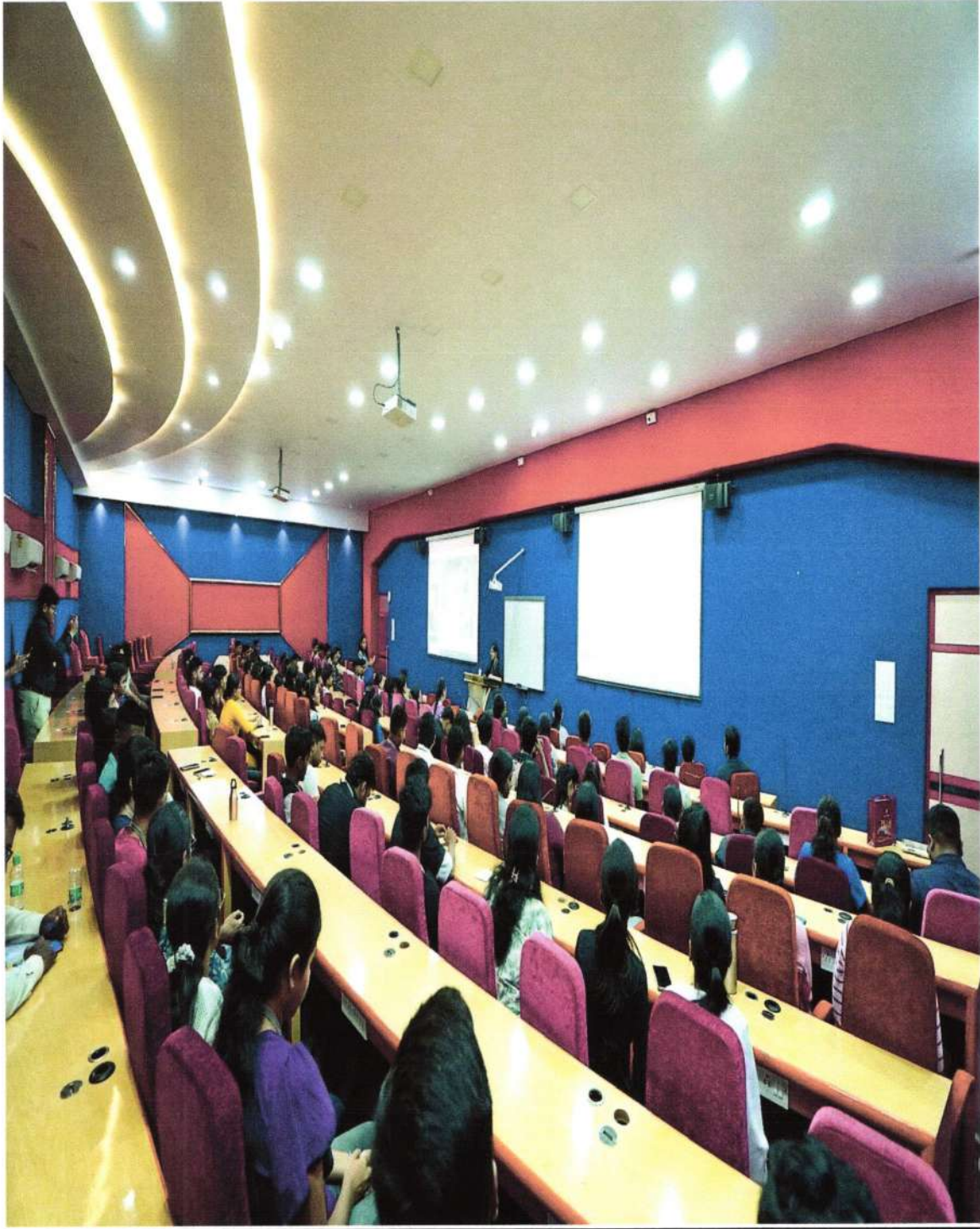
IPR Cell



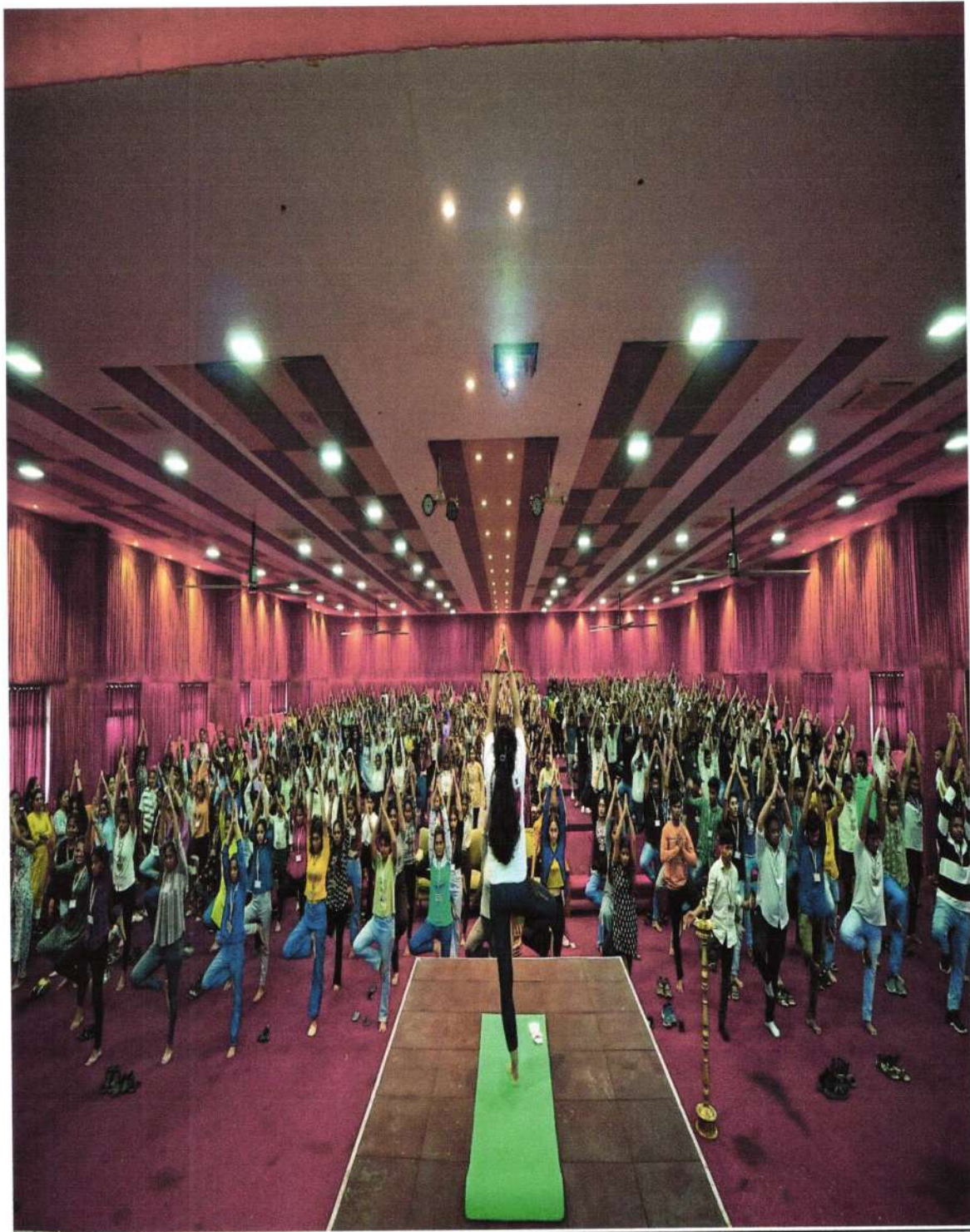
Gymnasium



Conclave



Auditorium



Integrated Campus Events

Women's Day



Shivjayanti



Republic Day / Independence Day

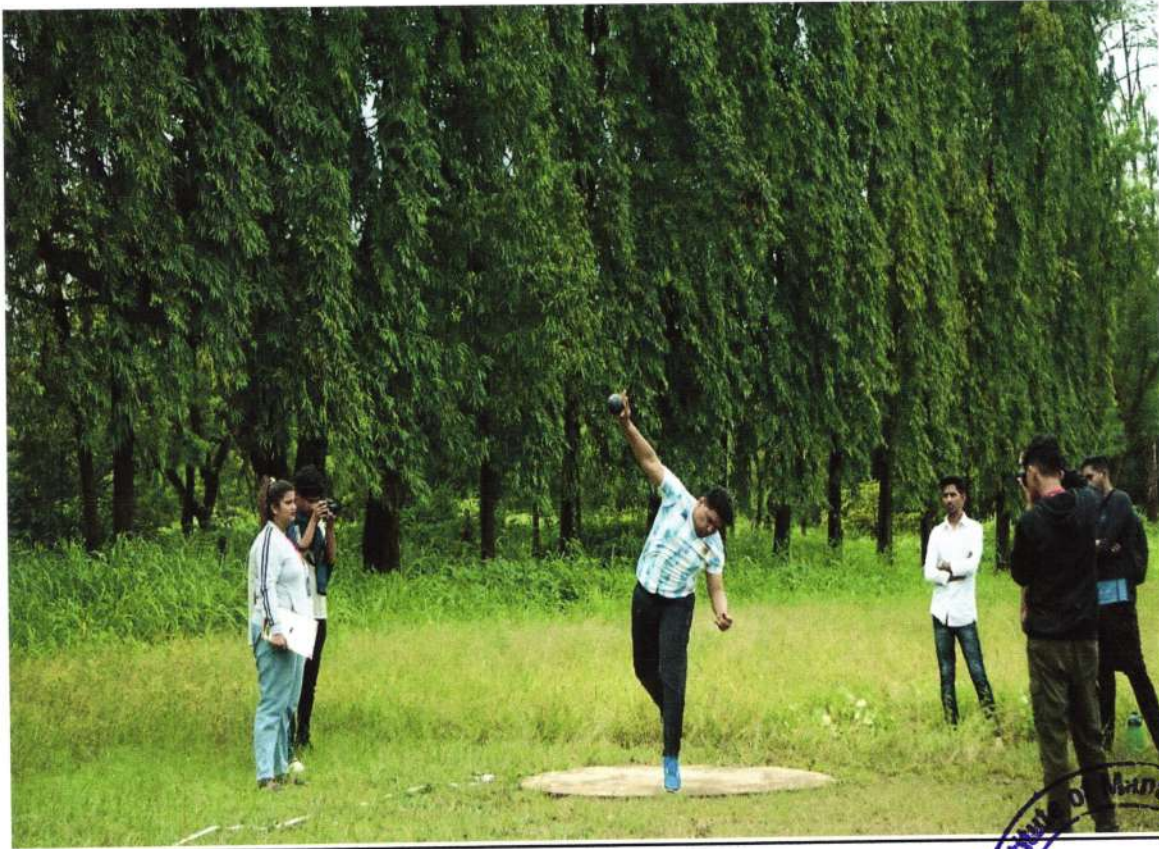




Rashtriya Ekta Diwas



Sports League



Euforia



Dostana



Business Plan Competition



Diwali / Christmas Celebration

